

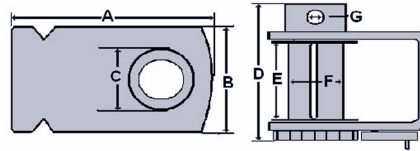
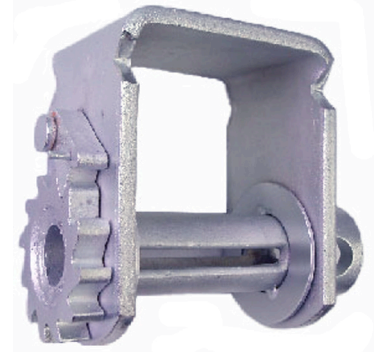
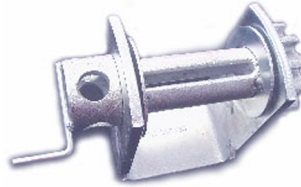


WINCHES



Standard Sliding Winches

- Sturdy construction
- Electro-galvanized for better corrosion protection
- Available with or without flanges
- Working load limit 5,400 lbs
- Extra strong ratchet pawl
- Cast steel mandrel
- Special design winches available upon request



Type	WLL (lbs)	Dimensions (inches)							Vanguard Code
		A	B	C	D	E	F	G	
Standard with flange	5,400	6.75	4.00	2.50	8.25	4.50	1.75	1.00	3705 1020
Standard without flange	5,400	6.75	4.00	2.50	8.25	4.50	1.75	1.00	3705 1021
Standard with flange & handle	5,400	6.75	4.00	2.50	8.25	4.50	1.75	1.00	3705 1063
Standard with handle, no flange	5,400	6.75	4.00	2.50	8.25	4.50	1.75	1.00	3705 1065

Warning:

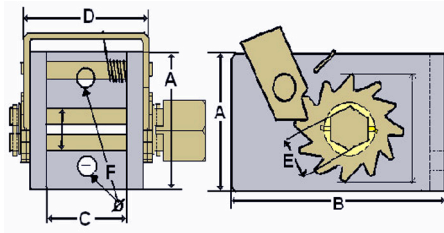
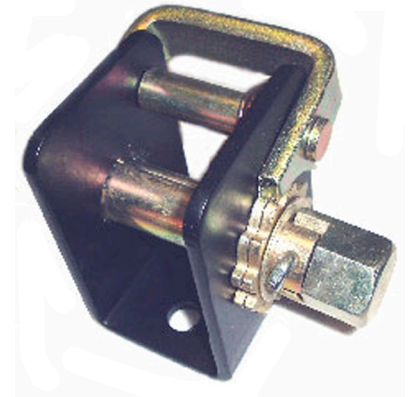
- Make sure that webbing is inserted min. 12" into slots on mandrel and wrapped 2 - 3 time around mandrel before tightening
- Do not use extensions with winch bars
- Do not use straps that are cut, frayed or otherwise damaged
- Do not release winch bars without prior checking that ratchet pawls are properly engaged
- Hold winch bars tightly to avoid bars from slipping out of your hands
- Excessive webbing on winches reduces working load limits

WINCHES



2" Lashing Winch

- Sturdy construction
- Base painted black, moving parts yellow chromated
- Working load limit 3,660 lbs
- Extra strong ratchet pawl
- Bolt-on type



Type	WLL (lbs)	Dimensions (inches)						Vanguard Code
		A	B	C	D	E	F	
HEX KEY	3,660	3.000	4.000	2.187	3.250	1.062	0.500	3705 1000

Warning:

- Make sure that webbing is inserted min. 4" into slots on mandrel and wrapped 2 - 3 time around mandrel before tightening
- Do not use extensions with winch bars
- Do not use straps that are cut, frayed or otherwise damaged
- Do not release winch bars without prior checking that ratchet pawls are properly engaged
- Hold winch bars tightly to avoid bars from slipping out of your hands
- Excessive webbing on winches reduces working load limits