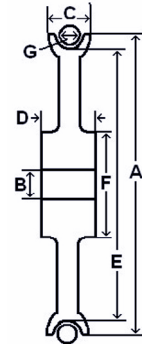


# SHEAVES



## Wire Rope Sheaves

- Machined from C-1045 steel



Type	Dimensions (inches)							Weight (lbs)	Vanguard Code
	A	B	C	D	E	F	G		
VGD 3	3	3/4	7/8	1	2 1/4	1 1/4	5/16	1	2937 0300
VGD 4	4	1	7/8	1	3 1/8	1 1/2	3/8	2	2937 0400
VGD 5	5	1	7/8	1	4	2 1/2	1/2	3	2937 0500
VGD 6	6	1 3/8	1 1/4	1 1/2	4 3/4	3	5/8	6	2937 0600

- Alternate bore sizes can be achieved by installing self-lubricated Bronze bushings!
- There is no established load rating for these sheaves; the Working Load Limit (WLL) depends on the pulleys onto which the sheaves are to be installed!

**Warning:** NEVER EXCEED WORKING LOAD LIMITS!