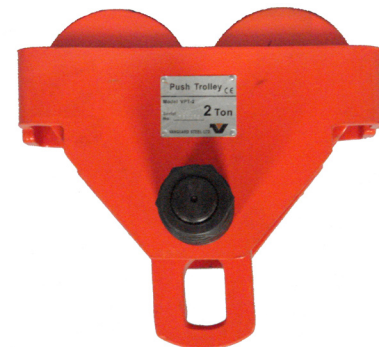
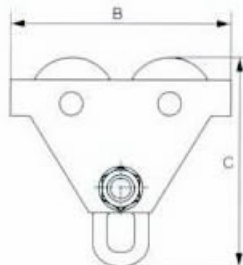
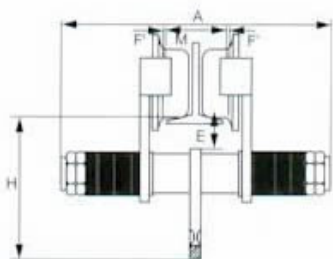


PUSH TROLLEYS



VGD Push Trolleys



Model No.	Capacity (tons)	Weight (lbs)	I-Beam Width		Dimensions (inches)				Vanguard Code
			mm	inches	A	B	C	H	
VPT-C 12	1/2	15.42	64 - 203	2.52 - 7.99	9.06	8.35	7.82	4.45	3857 2005
VPT-C 1	1	26.43	64 - 203	2.52 - 7.99	10.00	10.04	9.11	5.04	3857 2010
VPT-C 2	2	48.46	76 - 203	2.99 - 7.99	11.58	11.89	10.95	5.98	3857 2020
VPT-C 3	3	66.08	76 - 203	2.99 - 7.99	13.54	13.54	13.31	7.32	3857 2030
VPT-C 5	5	121.15	88 - 203	3.47 - 7.99	14.17	14.88	15.47	8.62	3857 2050

Installation:

THE INSTALLATION of push trolleys must be performed by qualified riggers

Ensure that all safety regulations are complied with during installation (use of safety harnesses, evacuation of the areas, warning signs...etc).

Measure the actual width of the beam.

When required, assemble the correct number of spacer washers equally on both sides, to the inside of the trolley side plates. Make sure that the swivel hanger pin trolley wheel flanges are 6mm greater than the runway beam width.

SLOWLY run the unit along the full length of the structure/runway beam to ensure safe factory operations, make all necessary adjustments **BEFORE** applying any load.

Warning:

FAILURE TO OBSERVE these warnings may result in serious injury or death!

- **NEVER EXCEED WORKING LOAD LIMITS**
- **During use, the accidental impacts or snagging of the loads being handled with surrounding objects may overload the units. Always remain aware of your surroundings.**
- **NEVER modify the equipment**
- **NEVER side pull the loads, and always ensure to centre the equipment above the load before lifting it**
- **DO NOT constantly use the end plates as a means of stopping**
- **DO NOT USE these push trolleys:**
 - unless the beam has been tested and approved for attaching lifting devices
 - unless the size range of the push trolley corresponds with the size of the beam
 - without making sure that the beam capacity exceeds the load rating of the push trolley
 - without making sure that the push trolley is fully tightened and properly engaged to the beam
 - without closely inspecting the push trolley for signs of wear or damage prior to use