

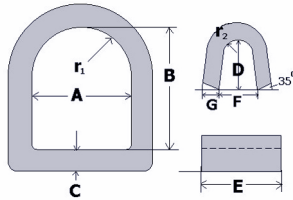


# D-RINGS



## D-Rings with Weld-on Hinges

- Made from drop forged carbon steel, quenched & tempered
- Self coloured, ready to be welded on truck body
- Hinges are bevelled 35° for proper weld penetration
- Design factor 3:1
- For best welding results use BONARC E 7016 coated welding electrodes or BONARC ER 70 S 6 welding wire



Size	WLL (lbs)	Dimensions (inches)									Vanguard Code
		A	B	C	D	E	F	G	r <sup>1</sup>	r <sup>2</sup>	
3 x 3 x 5/8"	6,000	3.000	3.000	0.625	0.875	2.500	1.000	0.375	1.500	0.375	3705 0015
3 x 4 x 1"	12,000	3.000	4.000	1.000	1.325	2.562	1.312	0.500	1.500	0.562	3705 0014

### Note:

WORKING LOAD LIMITS ARE FOR STRAIGHT IN-LINE PULLS ONLY

### Warning:

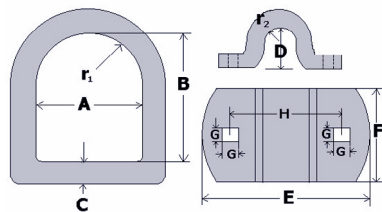
Welding file on hinges must be over the entire length of the hinge (dim. "E") with a minimum penetration on the truck frame of 1/8"  
Before welding, make sure that all contaminants like rust, oil, paint, galvanization, etc. are removed from welding area

# D-RINGS



## D-Rings with Bolt-on Hinges

- Made from drop forged carbon steel
- Strong bolt-on hinges, yellow chromated
- Working load limit 4,000 lbs
- Design factor 3:1



Size	WLL (lbs)	Dimensions (inches)										Vanguard Code
		A	B	C	D	E	F	G	H	r <sup>1</sup>	r <sup>2</sup>	
2.25 x 2.5 x 0.5	4,000	2.250	2.500	0.500	0.625	3.125	2.000	0.375	2.000	1.500	0.250	3705 0010

### Note:

WORKING LOAD LIMITS ARE FOR STRAIGHT IN-LINE PULLS ONLY

### Warning:

Use bolts of adequate size and strength only  
Secure bolts with washers and lock washers  
Torque-tighten bolts